



15 Greycoat Place, SW1P | £675 Per Week



**TUCKERMAN**  
ESTATE AGENTS  
PROPERTY PROFESSIONALS

# Greycoat Place, Victoria

Bright and spacious fully furnished two bedroom, two bath property situated on the fourth floor. Located in the heart of Westminster, available from 1st June 2024.

## ACCOMODATION

Available from the 1st June 2024, this bright and spacious fully furnished two bedroom, two bathroom property situated on the fifth floor the property boasts a modern and contemporary feel. The property extends to 887sq ft and comprises of; two double bedrooms, large open-plan living area, fully fitted kitchen and two bathrooms. Benefits include wood flooring.

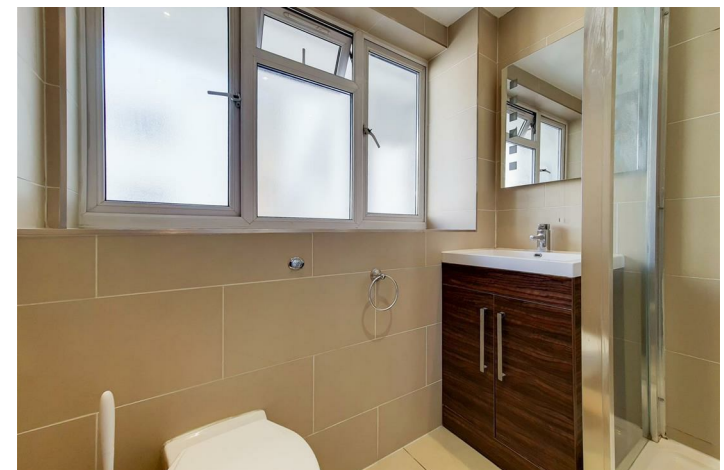
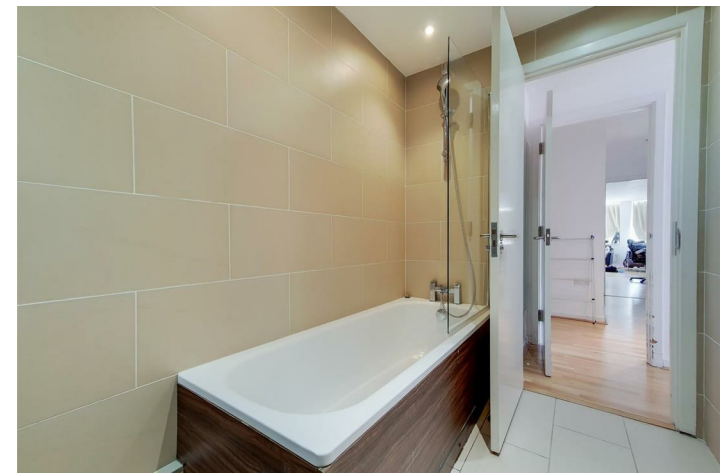
## LOCATION

The location is convenient for the many local amenities of Victoria Street such as Cardinal Place and within comfortable walking distance are Victoria, Westminster and St James's Park stations.

## COUNCIL TAX

Westminster City Council - Band F





# Greycoat Place, Victoria

Let

Per Week: £675 Per Week

Furnishing: Furnished

Available From: 1st June 2023

Local Authority: Westminster City Council

Council Tax Band: F

Approximate Gross Internal Area:  
887.00 sq ft

## Energy Efficiency Rating

	Current	Potential
<i>Very energy efficient - lower running costs</i>		
(92 plus) <b>A</b>		
(81-91) <b>B</b>		<b>84</b>
(69-80) <b>C</b>	<b>74</b>	
(55-68) <b>D</b>		
(39-54) <b>E</b>		
(21-38) <b>F</b>		
(1-20) <b>G</b>		
<i>Not energy efficient - higher running costs</i>		
<b>England &amp; Wales</b>	EU Directive 2002/91/EC	

TUCKERMAN  
ESTATE AGENTS

Greycoat Place, SW1P

CAPTURE DATE: 05/05/2021 LASER SCAN POINTS: 2,028,536

GROSS INTERNAL AREA

82.38 sqm / 886.73 sqft



GROSS INTERNAL AREA (GIA)  
The footprint of the property  
82.38 sqm / 886.73 sqft

NET INTERNAL AREA (NIA)  
Excludes walls and external features  
Includes washrooms, restricted head heights  
78.75 sqm / 847.66 sqft

EXTERNAL STRUCTURAL FEATURES  
Balconies, terraces, verandas etc.  
0.00 sqm / 0.00 sqft

RESTRICTED HEAD HEIGHT  
Listed (see area under 1.5 m)  
0.00 sqm / 0.00 sqft



Spec Verified floor plans are produced in accordance with Royal Institution of Chartered Surveyors' Property Measurement Standards. Plots and gardens are illustrative only and excluded from all area calculations. Due to rounding, numbers may not add up precisely. All measurements shown for the individual room lengths and widths are the maximum points of measurements captured in the scan.

IPW3 2B RESIDENTIAL: 84.08 sqm / 905.03 sqft  
IPW3 3C RESIDENTIAL: 80.34 sqm / 866.93 sqft

spec id: 6090fccc4048510dde8a70e2

Agents Note: Whilst every care has been taken to prepare these sales particulars, they are for guidance purposes only. All measurements are approximate and for general guidance purposes only and whilst every care has been taken to ensure their accuracy, they should not be relied upon and potential buyers are advised to recheck the measurements

**TUCKERMAN**  
ESTATE AGENTS  
PROPERTY PROFESSIONALS

020 7222 5510

info@tuckermanresidential.co.uk  
52 Moreton Street, London, SW1V 2PB  
www.tuckermanresidential.co.uk